



WEZARP™ Client

# USER GUIDE



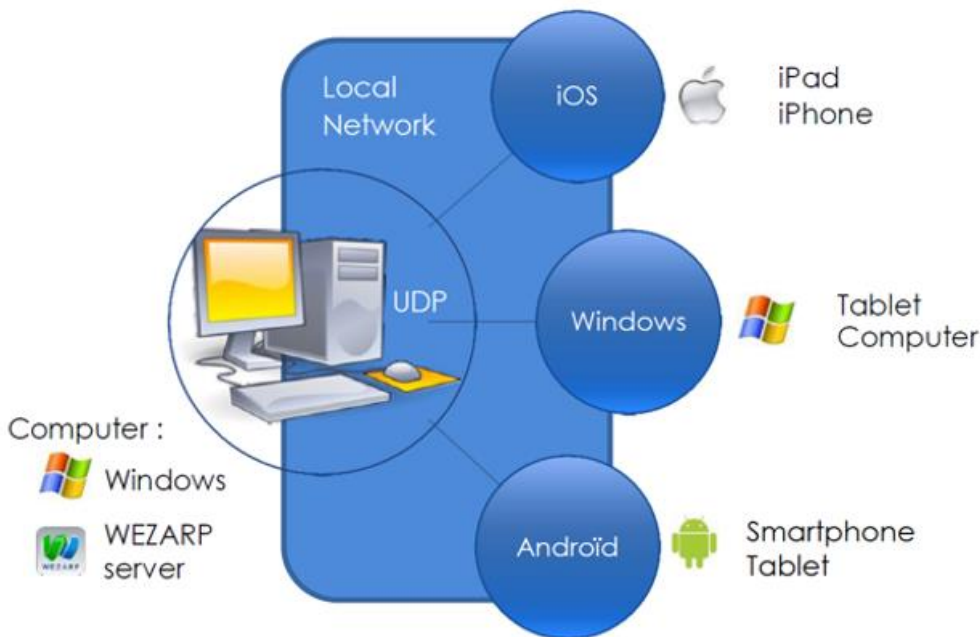
**WEZARP**

Wezarp.com  
Version 1.2  
Contact: [support@wezarp.com](mailto:support@wezarp.com)

# WEZARP™ Client User Guide for Windows, iOS & Android

## Take the control of any Windows application with your remote device

**WEZARP™** aims to visualize and control any Windows application from a tablet, smartphone or a remote PC. **WEZARP™** proposes a simple solution, multi-client, multi-window, multi-control without ergonomic or customization limitation of the remote front panel.



**WEZARP™** is based on the communication via UDP/IP between a client (computer or tablet) and a server connected on the same local network.

**Wezarp™** client is available for iOS, Android and Windows. It allows to take the control of any application that contains **Wezarp™** technology running on a Windows server.

## Table of contents

1	<b>Wezarp™</b> Client for iPad and iPhone .....	3
1.1	Get the App .....	3
1.2	Device Settings.....	3
1.3	App Settings.....	4
1.4	App Features .....	4
1.4.1	Single touch events .....	5
1.4.2	Double touch events .....	5
2	<b>Wezarp™</b> Client for Windows.....	6
2.1	Get the Application .....	6
2.2	Features.....	7
2.3	Settings .....	8
2.3.1	Move Windows .....	8
2.3.2	Configuration IP Addresses .....	9
3	<b>Wezarp™</b> client for Android.....	11
3.1	Get the App .....	11
3.2	Device Settings.....	11
3.3	App Settings.....	12
3.4	App Features .....	12
3.4.1	Single touch events .....	13
3.4.2	Double touch events .....	13
3.4.3	Menu app settings event .....	13

# 1 Wezarp™ Client for iPad and iPhone

## 1.1 Get the App

Download and install **Wezarp™** app from the App Store.



FIGURE 1: WELCOME PICTURE ON THE APP STORE

## 1.2 Device Settings

The iPad or iPhone have to be connected on the same local network than the server.

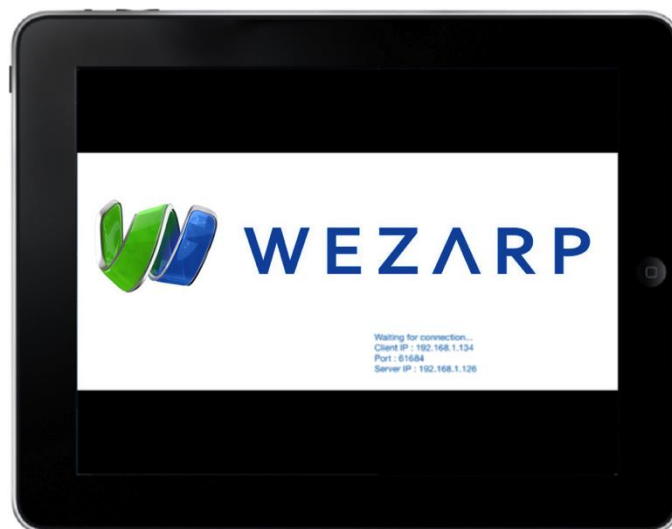


FIGURE 2: WAITING PICTURE ON IOS WEZARP™ APP

## 1.3 App Settings

In order to set the server IP address, go to the app settings. The port must be the same than the server one.

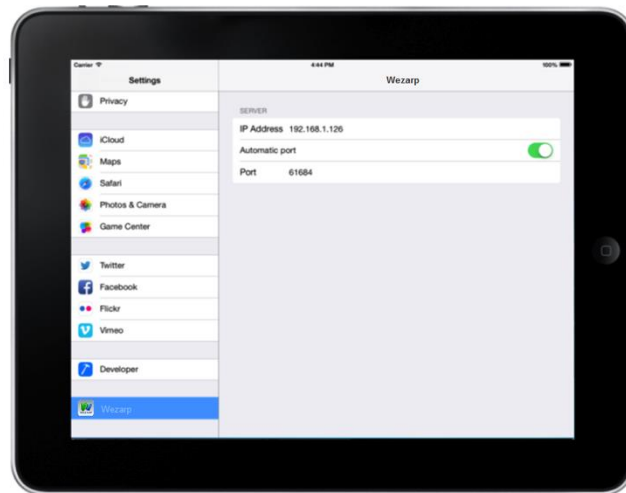


FIGURE 3: IOS APP SETTINGS

## 1.4 App Features

We can distinguish two kinds of user events. Events which have to be transmitted to the server and events related to display management. The difference between both events is managed by the number of touches. The accuracy required for mouse gesture imposed that the events transmitted to the server are single touch events.

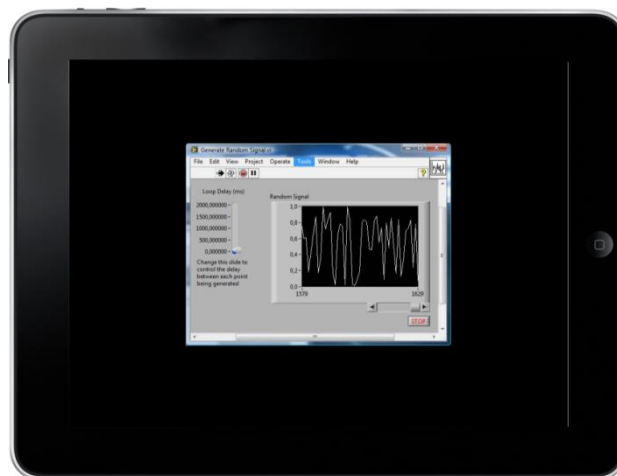
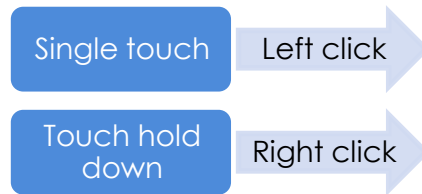
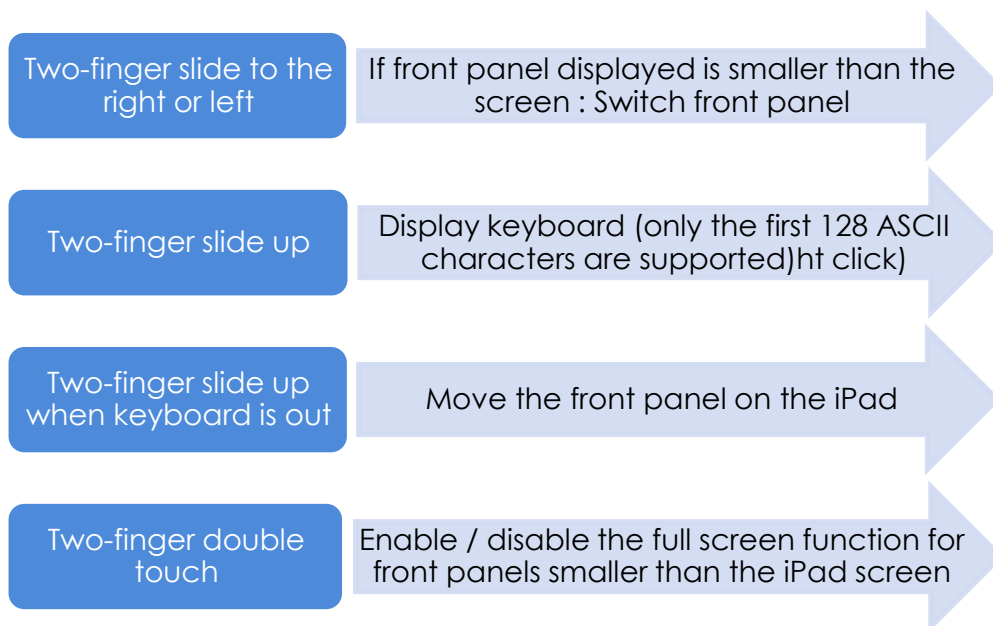


FIGURE 4: REMOTE FRONT PANEL ON IPAD

## 1.4.1 Single touch events



## 1.4.2 Double touch events



Multiple device orientations and zoom are also supported.

## 2 Wezarp™ Client for Windows

### 2.1 Get the Application

Download and install **Wezarp™** Client for Windows from [www.wezarp.com](http://www.wezarp.com). When installation is completed, the following shortcut appears on your desktop.

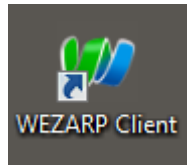


FIGURE 5: WEZARP™ CLIENT FOR WINDOWS ICON

When you launch the application, a pop-up window and an icon in Windows taskbar appear. The pop-up window indicates client and server IP address. Right click on the icon to access the application settings.

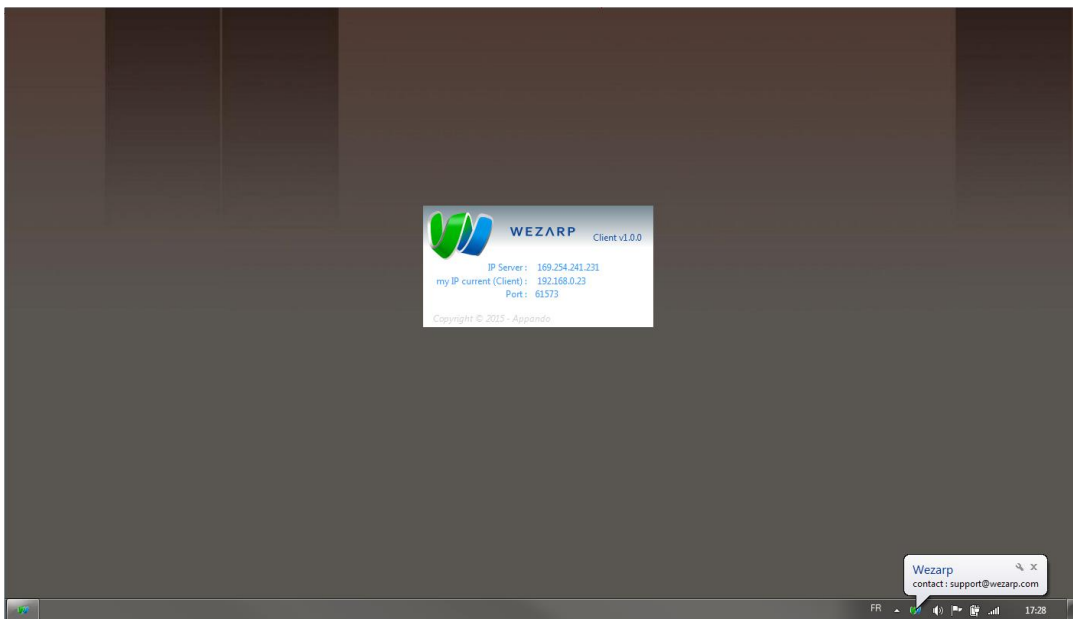


FIGURE 6: WEZARP™ CLIENT FOR WINDOWS LAUNCHING

## 2.2 Features

**Wezarp™** client for Windows allows the control of any application running on a Windows server. All front panels will be displayed and automatically centered on the screen.

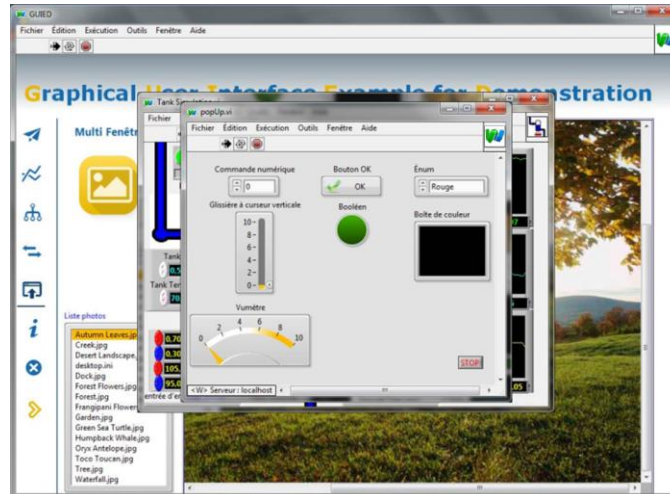


FIGURE 7: MULTI FRONT PANEL DISPLAY

You can navigate between front panels from Windows taskbar.

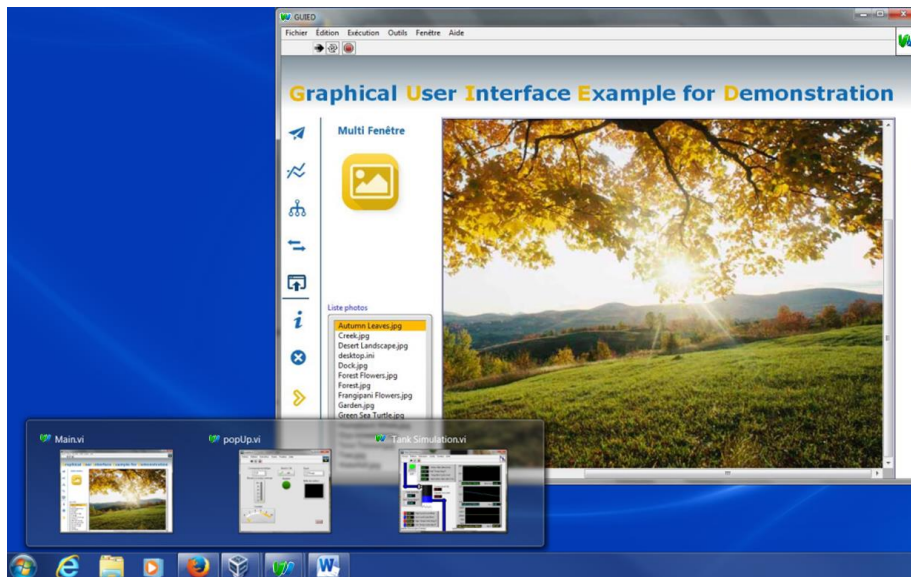


FIGURE 8: FRONT PANEL NAVIGATION



## 2.3 Settings

Available via the systray menu by right clicking on Wezarp icon, settings are:

Move Windows	Allows to move window as described before.
Configuration IP Addresses...	Open a popup window for advanced IP configuration.
Help	Open the user guide.
About	Displays IP addresses (server and client) currently used and software version.
Exit	Closes Wezarp client application.

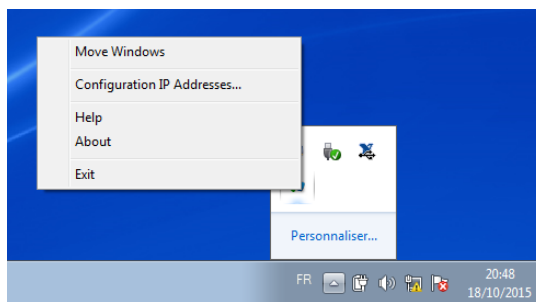


FIGURE 9: WEZARP™ CLIENT FOR WINDOWS SETTINGS MENU

### 2.3.1 Move Windows

You can move the position of windows by selecting "Move Windows". All front panels are disabled and grayed out with a cross shaped blue icon in the center.

You can move front panels by clicking left and holding down while moving. By releasing, it becomes enable.

Move every front panels or uncheck "Move Windows" to come back in standard mode.

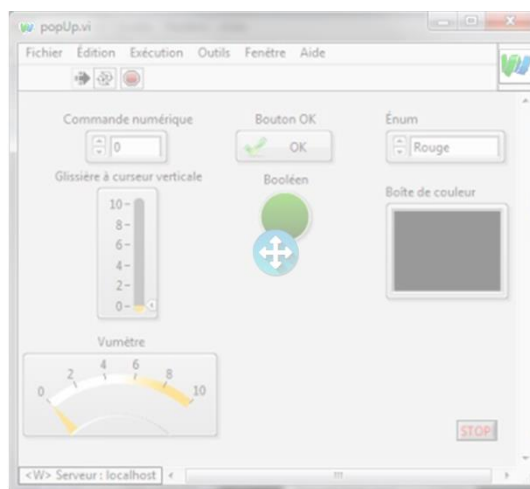


FIGURE 10: FRONT PANEL MOVING

## 2.3.2 Configuration IP Addresses

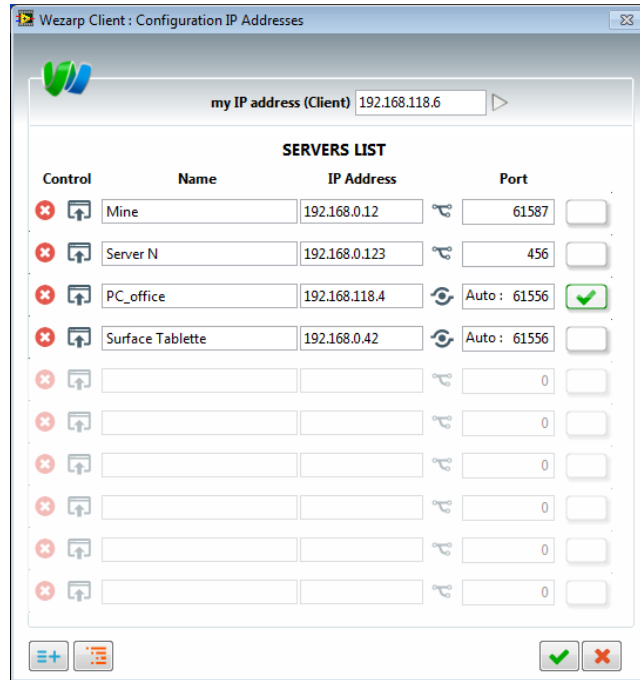


FIGURE 11: WEZARP™ CLIENT IP CONFIGURATION FOR WINDOWS

### 2.3.2.1 My IP address

The Windows device which runs **Wezarp™** client has to be connected on the same local network than the server(s).

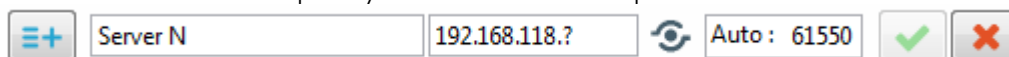
The current Client (my IP address) used is displayed at the top.  
By default, the port is automatically set to 61550 + last client IP number.  
If you have several Network Interface Card, you can swap your IP address to use by clicking on “my IP address (Client)”.

If you specify a different port value manually. You have to define the same port on server side.

### 2.3.2.2 Servers list


#### 2.3.2.2.1 Add a new server

Click on button to specify the IP Address and port of the new server.











Then, click on validate to apply and make it appears in the list.

## 2.3.2.2.2 Delete list

Click on  button to erase full servers list.  
Then, click on validate to apply and erase the list.

## 2.3.2.2.3 Modify server configuration

A server configuration is defined by:

Control (Detection)	Description	Field type	
	Not detected	Indicator	
	Detected		
Control (Authorization)			
 Allowed	Server is defined	Selectable	
 Delete	Delete server from the list		
Name			
Server N	Server name.	Editable	
IP Address			
xxxx.xxxx.xxxx.xxxx	Server IP address. It must be on the same local network		
Port			
 Auto :	Auto port is activated. Port value is automatically defined as 61550 + last client IP number		
	Port is manually defined by value		
Selection			
	Server currently used	Selectable	
	Server disabled		

Click on validate to apply the new configuration.

## 3 Wezarp™ client for Android

### 3.1 Get the App

Download and install **Wezarp™** app from Google Play.

### 3.2 Device Settings

The Android Tablet or Smartphone has to be connected on the same local network than the server(s).



FIGURE 12: WAITING SPLASH SCREEN FOR ANDROID WEZARP™ APP

## 3.3 App Settings

In order to set the server(s) IP address(es), make appear the app settings by sliding with one finger from the left border side to the center. The port must be the same than the server one.



FIGURE 13: ANDROID MENU APP SETTINGS

## 3.4 App Features

We can distinguish two kinds of user events. Events which have to be transmitted to the server and events related to display management. Difference between both events is managed by the number of touches. The accuracy required for mouse gesture imposed that events transmitted to the server are single touch events.

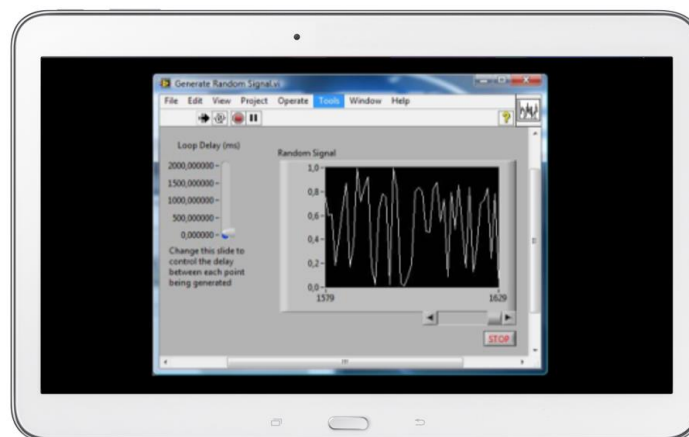
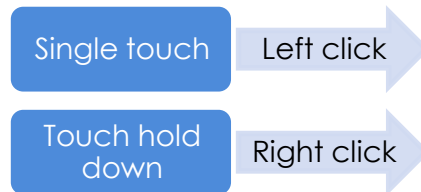
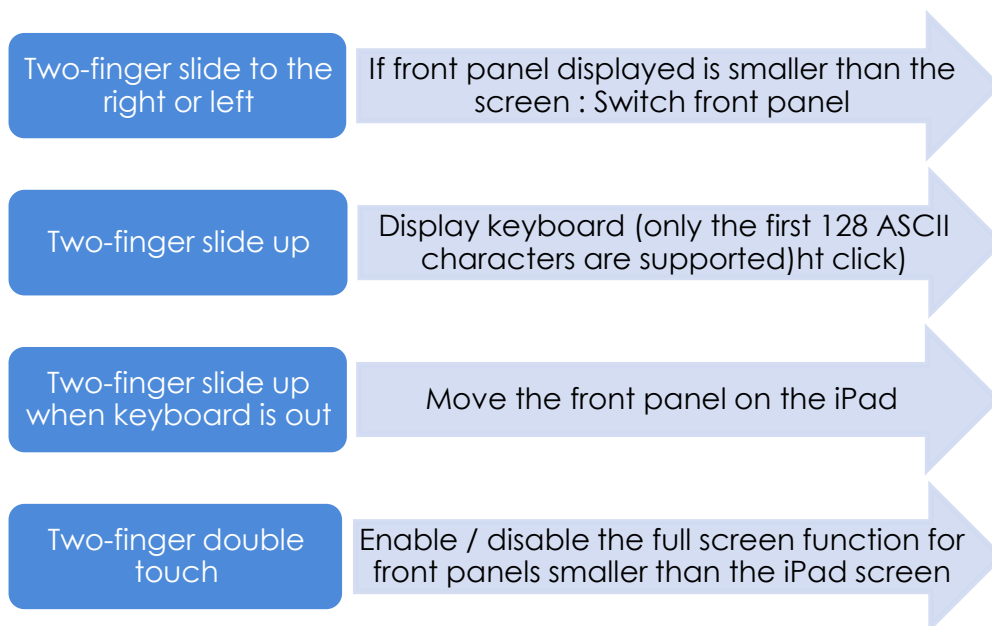


FIGURE 14: REMOTE FRONT PANEL ON ANDROID DEVICE

## 3.4.1 Single touch events

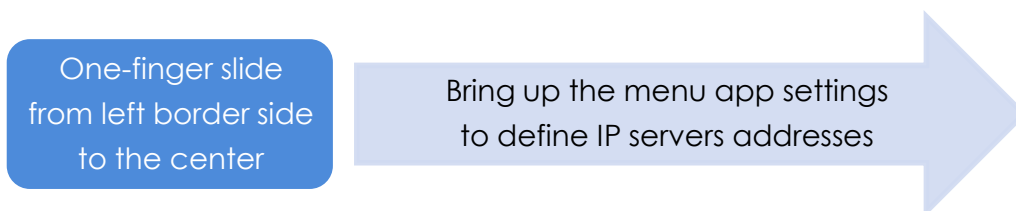


## 3.4.2 Double touch events



Multiple device orientations and zoom are also supported.

## 3.4.3 Menu app settings event



## INDEX

Figure 1: Welcome picture on the App Store.....	3
Figure 2: Waiting Picture on iOS Wezarp™ APP.....	3
Figure 3: iOS App Settings .....	4
Figure 4: Remote Front Panel on iPad .....	4
Figure 5: Wezarp™ Client for Windows icon .....	6
Figure 6: Wezarp™ Client for Windows launching .....	6
Figure 7: Multi Front Panel Display .....	7
Figure 8: Front panel navigation .....	7
Figure 9: Wezarp™ Client for Windows settings menu.....	8
Figure 10: Front panel moving .....	8
Figure 11: Wezarp™ Client IP Configuration for Windows.....	9
Figure 12: Waiting Splash screen for Android Wezarp™ APP .....	11
Figure 13: Android Menu App Settings.....	12
Figure 14: Remote Front Panel on Android device .....	12